

MERCHANT

Delivering Competitive Edge

Merchant Release 6.0.3

**Transmittal Document including
New Features & Upgrade Instructions**



Publication No. 79-00002-02A

August 2002

1st Edition



ELECTRONIC DATA PROCESSING PLC

1st Edition, August 2002

It is the policy of **Electronic Data Processing PLC** and its subsidiaries to improve products as new technology, components, software and firmware become available. **Electronic Data Processing PLC** and its subsidiaries, therefore, reserve the right to change specifications without prior notice.

All features, functions, and operations described herein may not be marketed by **Electronic Data Processing PLC** and its subsidiaries in all parts of the world. Therefore, before using this document, consult your system supplier for information that is applicable and current.

Copyright Notice

This document contains information which is proprietary to and considered a trade secret of **Electronic Data Processing PLC** and its subsidiaries. It is expressly agreed that it shall not be reproduced in whole or part, disclosed, divulged or otherwise made available to any third party directly or indirectly. Reproduction of this document for any purpose is prohibited without the prior express written authorisation of **Electronic Data Processing PLC**.

Disclaimer

Electronic Data Processing PLC and its subsidiaries make no representation and no expressed or implied warranty of any kind with the regard to the documentation for any particular purpose. Whilst every effort has been made to ensure the accuracy of the documentation **Electronic Data Processing PLC** and its subsidiaries accept no liability for any losses or consequential damages arising directly or indirectly from the use of the documentation.

Electronic Data Processing PLC and its subsidiaries reserve the right to amend this documentation without obligation to notify any person or organisation of any such amendments.

©2002 Electronic Data Processing PLC

Contents

MERCHANT RELEASE 6.0.3 OVERVIEW.....	3
UPGRADE REQUIREMENTS	5
<i>System Requirements:.....</i>	<i>5</i>
<i>Before the upgrade:</i>	<i>5</i>
UPGRADE/LOADING 5.2.1 – 6.0.3	7
1. <i>Pre-Upgrade Checks.....</i>	<i>7</i>
2. <i>Identifying Accounts</i>	<i>7</i>
3. <i>Starting the Upgrade.....</i>	<i>8</i>
4. <i>Upgrade Confirmation</i>	<i>10</i>
FEATURES AND FUNCTIONS	11
<i>ENHANCED AUDIT INFORMATION.....</i>	<i>11</i>
<i>BRANCH ORDER PROCESSING - BOP.....</i>	<i>12</i>
<i>CASHBOOK - CLP.....</i>	<i>13</i>
<i>ENHANCED SALES DATA CAPTURE.....</i>	<i>15</i>
<i>EXECUTIVE INFORMATION SYSTEM - EIS.....</i>	<i>17</i>
<i>GENERAL LEDGER - GLP.....</i>	<i>19</i>
<i>PRODUCT MAINTENANCE</i>	<i>23</i>
<i>DIARIES</i>	<i>28</i>
<i>PURCHASE INVOICE PROCESSING.....</i>	<i>32</i>
<i>PURCHASE LEDGER PROCESSING - PLP.....</i>	<i>35</i>
<i>PURCHASE ORDER PROCESSING - POP.....</i>	<i>36</i>
<i>REMOTE ORDER ENTRY - ROE.....</i>	<i>40</i>
<i>STOCK CONTROL - SCP.....</i>	<i>41</i>
<i>SALES LEDGER PROCESSING - SLP.....</i>	<i>42</i>
<i>SALES ORDER PROCESSING - SOP</i>	<i>46</i>
<i>TIMBER</i>	<i>65</i>
DFR’S CLEARED AFTER RELEASE 5.2.1	67

Merchant Release 6.0.3 Overview

Electronic Data Processing PLC is pleased to announce the General Customer Availability (GCA) of Merchant 6.0.3.

Merchant 6.0.3 is a major product release, which incorporates the platform elements designed to support current and future cornerstone application deliverables. These include the Quantum VS Unified Financials Suite, the Quantum VS eBIS-XML Document & Data Gateway and the Quantum VS e-Business & e-Catalogue solutions.

Merchant 6.0.3 incorporates scheduled, value-added product feature developments and some 950 Development Feedback Requests (DFR's). The DFR's are tabled in this Transmittal Document, beginning on page 67. Merchant 6.0.3 is ported to, and relies upon UniVision 8.0.x or higher release level.

Merchant 6.0.3 is a high performance, integrated and feature rich software product, specifically designed and developed to meet the operational and management information reporting requirements of businesses in the £2 million to £500 million sales turnover range, whose business operation is that of distribution.

Upgrade Requirements

System Requirements:

This upgrade relies upon UniVision 8.0.x (or higher) and a Pentium processor. If you do not know which version of UniVision you are using then at UCL, from any account, enter:

>VERSION

If you do not know whether your processor is Pentium based then please check your licence documentation.

Before the upgrade:

The following instructions describe the actions to be followed when upgrading your MERCHANT system to Release 6.0.3. Please read this material carefully and if you are unclear on any aspect, contact Application Support Group - ASG on 01908 249710 *before* commencing the operation.

On successful completion of the upgrade:

- Return the 'Confirmation of Upgrade' form to Software Product Distribution.
- Return the Tape to Software Product Distribution (see page 10).

NOTE: If you choose not to return the tape upon which the Merchant 6.0.3 upgrade was shipped, then this will be invoiced to you.

Upgrade/Loading 5.2.1 – 6.0.3

1. Pre-Upgrade Checks

WARNING * WARNING *** WARNING**

Before commencing the upgrade ensure that **ALL** users are logged off the system and that you have produced **two** fully verified file-saves. During the upgrade process ensure users do not logon to the system.

- 1.1. As well as users with screens you need to stop the update and posting lines in all accounts. This is achieved using menu options:

SOP.U6 – stop posting line.

SOP.U11 – stop update line.

- 1.2. You must also stop other background processes including WORM, ROE, EOB, EDI and FAX.
- 1.3. If you wish to set **MAXUSERS** while running the upgrade, set it to 3 to allow access to the system in case of difficulty.

2. Identifying Accounts

The upgrade process requires you to know the names of your Merchant DATA accounts.

With the standard Merchant implementation you must upgrade **ALL** Merchant accounts as part of the same project – including the Training account.

3. Starting the Upgrade

- 3.1. You need to be at UCL in the DATA account you are upgrading.

When logging on ensure you use the true name of the DATA account – for example MER not QMER - **DO NOT** start this if you are logged in using a synonym account (that is a Q-pointer)

The account must have a SYS3 privilege level.

- 3.2. Use SOP.U2 to assign yourself to a printer that is loaded with listing paper.
- 3.3. Load the upgrade tape into the appropriate tape drive. Execute the following commands at UCL.

```
>DELETE MD LOAD-UPGRADE
>DELETE MD UPGRADE
>T-SELECT n      (n is tape drive)
>T-ONLINE
>T-RET
>T-LOAD MD (O   (final character is letter O for Overwrite
                - not numeric zero)
>LOAD-UPGRADE
>UPGRADE
```

```

SYS REF: UPGRADE          edp >>>>> M E R C H A N T <<<<<<          15/03/01
                          MERCHANT RELEASE 6.0 - UPGRADE
Module
Merchant account          Y MER.INTERFACE          MER
Sales Ledger account      Y MER.INTERFACE          MER
Purchase Ledger account   Y MER.INTERFACE          MER
General Ledger account    Y MER.INTERFACE          MER
Stock Control account     Y MER.INTERFACE          MER

Continue with upgrade (Y/N/S) ? █

```

Fig REL6-01

Within the standard MER account, the screen (Fig. REL6-01) is presented and all the DATA account details are entered for you. If your main account is not called MER or you are upgrading another account, the cursor will stop in the Data Account column and expect you to enter appropriately.

The account information is displayed at which point three options are available – Y, N or S.

Option **S** allows the status of the prior UPGRADE to be displayed. To page through this information use **N** for next page and **P** for previous. **<ESC>** returns to the Y N or S option.

If you want to quit the upgrade type **N** otherwise type **Y** to continue.

The upgrade process proceeds – taking approximately 7-15 minutes.

An error message is displayed and the upgrade aborted if any unrecoverable error is encountered.

Details of the error will be printed and are important if the Support staff are to give their help as quickly as possible.

Once any corrections have been made, the upgrade can be re-run by typing **UPGRADE** at UCL.

On completion the message **validation completed.** is displayed.

The report produced by the upgrade should be retained for reference.

Following this message, Sales and Purchase Ledger screens must be recompiled as follows:

enter **COMPILE.LEDGER.SCREENS** at UCL

- 3.4. Steps 3.1 to 3.3 must be repeated for each Merchant **DATA** account, including your training (test) account if present.

4. Upgrade Confirmation

Please sign the attached document (Confirmation of Upgrade) and return it with the tape to:

Paul White
Software Products Distribution
Electronic Data Processing PLC
Beauchief Hall
Beauchief
Sheffield
S8 7BA

Paul White may be contacted by telephone on 0114 262 2034, or by e-mail: paulw@edp.fastfreenet.com.

Features and Functions

ENHANCED AUDIT INFORMATION

All actions taken during the maintenance of a master-file cause the creation of audit records that identify the old and new values for the amended data, the data created for new records or the deleted information of a purged record. A key enhancement to this capability has been introduced into Release 6. All audit records now record operator, port, date and time. This provides you with additional facilities for recording when and where records were amended both for security and management information purposes.

This feature is referred to as Extended Dayends and is supported by not just Amender but all master file maintenance routines, for example SOP.S1, SOP.M6.

The upgrade automatically enables this functionality by installing the item EXTENDED.DAYEND in the COMPANY file with attribute 1 set to 'Y'. All standard dayend PROCs and the dictionaries for the DAYEND.xxxx files (for example DAYEND.CUST, DAYEND. PROD) have been extended to support these additional attributes, namely:

attribute 7	Port No. or User Name in a network environment
attribute 8	Operator Code
attribute 9	Date – previously att 5
attribute 10	Time – previously att 6

If you choose to print the DAYEND reports, field 7 will now also be printed. The correct presentation of the data will not appear until the first DAYEND after the upgrade has been completed which formats these items.

Where you have created your own master files maintained through AMENDER, the program;

>Enable.dayends

should be run from UCL for each of these files. After entering the filename a further prompt will appear:

Enter a password or escape to end:

Simply enter 'Escape'.

BRANCH ORDER PROCESSING - BOP

Branch Supply – Order Allocation - BOP.6 allows the supplying branches to allocate stock to the order requests of ordering branches. Whole or partial allocations are allowed and any allocation made can be deemed to complete the order. An optional hard copy report of the allocations made can be produced on completion of allocations. The hard copy report could be printed on pre-defined stationery for use as an acknowledgment/goods receipt note if so desired.

This feature is accessed using a new option, "F" ,provided in stock allocation, which performs automatic allocation of stock to all the lines on a branch order. The process performs a check against available free stock and allocates accordingly.

Branch Supply - Stock Replenishment - BOP.7 – BRANCH SUPPLY – STOCK TRANSFER (OUT) - previously when attempting to receive stock into an ordering branch that had five levels of FIFO stock present – the process terminated. Enhancements have been introduced to clarify the situation by preventing receipt. BOP.7 now displays the following message.

```
Product LINTEL.G200 Maximum FIFO Levels in SUSPENSE
```

CASHBOOK - CLP

Automatic Purge routines – PLP.U16 / SLP.U15 - For those Users who are utilising currency ledgers, the system maintains two files that allow cash from the Purchase and Sales ledger to update both the Nominal ledger and Cashbook automatically. A purge routine for these files has been introduced.

The files SCASH and PCASH have very similar roles to SANALYSIS and PANALYSIS but unlike the latter they need to be purged manually using two new routines. These new routines are to be found on the Utilities menu, PLP6 and SLP6, and are displayed as items PLP.U16 and SLP.U15.

The system must be configured to purge items older than a given number of periods by using these routines.

The item HOLD.PCASH.PERIODS needs to be created in the PLP.FORMAT file, the content of attribute 1 is a number denoting the number of months you wish to retain. The equivalent switch for the sales ledger is HOLD.SCASH.PERIODS in the SLP.FORMAT file.

Our recommendation is to set both switches to 4 meaning that the current months data plus the 3 previous months will be retained, however, where related ledger cash posting is in use (GLP.U6 and/or GLP.U7), only records that have updated the Nominal and Cashbook can be deleted.

If GLP.U6 is in use then attribute 3 of the CLIENT item GLP.NOT.LIVE must be set to '0' to indicate this. If purchase ledger cash is manually posted via GLP1 then attribute 3 must be set to a '1'. Attribute 4 must also be set to '1' or '0' according to your use of GLP.U7.

VAT audit trail – CLP.R5 - In order to standardise the VAT audit trail within Merchant 6.0.3. cashbook and to conform to the standard purchase and sales ledger format, CLP.R5 has been amended so that it will now prompt as follows:

Is this a Re-run (Y/N) or (E)xit ? :

Is this the start of a new vat quarter (Y/N) ? :

'Is this a re-run?' gives you an opportunity to reprint the last vat report produced. If 'Y' is entered then you will be asked to enter start and end dates. Because the report is being re-run, these dates play no part in the selection of the transactions to be included and are just used in the report heading.

'New vat quarter?' what this question is asking is - do you need to print the brought forward figures from the previous vat report, or is the first vat report of the new VAT quarter?

Update nominal short codes file - CLP.U3 - when entering a short code the system now allows input of a description. (Included on late releases of 5.2.1).

Bank Maintenance - CLP.M1 - A new sub screen is introduced that provides for simpler entry of multiple subledger codes. Codes are validated against appropriate SUBLEDGER file. Subledger code 999 is now prohibited.

```
SYS REF: CLP0/MER      edp >>>> M E R C H A N T <<<<<      22/08/01  SCREEN 1
      BANK DETAILS MAINTENANCE
-----+-----+-----+
1. Account number   : 08000800      Subledger List      Page: 1
2. Bank name       : Barclays Bank pl+
3. Address line 1  : 32 Acacia Avenue; 1 02 DOLLARS
4. Address line 2  : Neasdon        ; 2 01 STERLING
5. Sort code       : 56-26-88
6. Telephone number : 01908 665522
7. Extension       : 123
8. Fax number      : 01908 249798
9. Contact name    : Fred Quimby
10. Date opened    : 01/06/89
11. Account name   : Trading Account
12. Comment        :
13. Subledger      : 02.01
14. Currency       : GBP
-----+-----+-----+
Enter option █
J(p), D(own), I(nsert), R(emove), A(dd), nm, Esc
```

Fig REL6-07

Cheque/Remittance Print - CLP.Q3 - amendments introduced to avoid production of negative value cheques.

Assign Cheque Numbers - CLP.Q5 - when entering cheque numbers the system now allows the operator to use the escape key to exit without entering a cheque number.

ENHANCED SALES DATA CAPTURE

Merchant automatically maintains its own sales performance files PRODBRN, GROUPBRN and CUSTBRN amongst others. However, the structure of these specific files is not suitable for every reporting purpose and to meet this end Merchant allows a user to design the record key structure of their own sales data files. These are the User Analysis files.

The construction of such additional files is in the pattern of period-to-date and year-to-date sales, costs and quantities. In this upgrade the data capture has been extended to include several sets of 13 period specific fields. The Client SLP record determines which period is the current period.

The Merchant 5.2.1 file structure of the user bespoke analysis files is;

Att 1	Period to date quantity
Att 2	Period to date sales
Att 3	Period to date costs
Att 4	Year to date quantity
Att 5	Year to date sales
Att 6	Year to date costs

The complete format of the record is now extended as follows:

Att 11 – 23	Period 1 – 13 quantities current year
Att 26 – 38	Period 1 – 13 sales current years
Att 41 – 53	Period 1 – 13 costs current year
Att 56 – 68	Year to date – Period 1 – 13 quantities
Att 71 – 83	Year to date – Period 1 – 13 sales
Att 86 – 98	Year to date – Period 1 –13 costs
Att 101 – 188	Previous year’s values corresponding to attributes 11-98.

In order for users to adequately review the current reporting facilities that may already be in place for the bespoke files, the new upgrade does not automatically restructure these files. This gives you the opportunity to check that an enlarged record will not corrupt existing data – a process that is best undertaken with PSG assistance. Where EDP is expected to rewrite reporting programs normal charges will apply.

Once enabled this feature will automatically provide an extended Dictionary to describe the new fields. All data file records will evolve into their new shape.

Each Analysis record is extended as it is used. Dayend (SOP.U1) is likely to be the first function to update the User Analysis files, but it will almost certainly update only a proportion of the file according to those sales which have been made that day and the key of the User Analysis file. The Dayend updated records will not immediately grow to the full 188 attributes but will only increase to the size of the last required field.

The other activity that will extend the size of the User Analysis records is the Year End function. [This function does not require operator execution as it will be implemented to be a standard part of the Sales Ledger Period End activity.]

When the Dayend update first extends a User Analysis record, the three period specific attribute sets are updated by the content of fields 1-3, and the year-to-date values from fields 4 to 6 will go into the three year-to-date period ranges. This will mean that for a mid-year implementation the year-to-date figures will not be a total of the prior period specific fields.

EXECUTIVE INFORMATION SYSTEM - EIS

This new functionality gives Merchant users a multi-level Executive Information System. This is an interactive way of reviewing sales performance. While just providing views of sales and costs and margin figures for today, period to date, and year to date, what is revolutionary about this feature is the interlinking of data at many different levels. The intention is to allow management to follow up the interesting or concerning figures from an overview display by drilling down to the supporting detail. The sophisticated file structure will enable this to be an instantly responding screen-based function and not an overnight, print-based activity. The displays also detail Stock Value at the same many layered levels all the way down to the single product line.

Within one program the user can pursue the specific branch, product group or even go down to the individual product which is delivering results outside the envelope. Navigation up and down from one level to another is easy.

SYS REF:		edp >>>> M E R C H A N T <<<<						19/03/01		SCREEN
MANAGEMENT SALES INFORMATION										
Period: 3										
		<----- Today ----->			<----- Period To Date ----->			<----- Year To Date ----->		
Ln	Sales Type	Sales	Profit	Margin %	Sales	Profit	Margin %	Sales	Profit	Margin %
1	DEL A/C	467.95	-382.10	-81.65	686.59	-187.46	-27.30	219951.03	205592.97	93.47
2	DEL CASH	13176.00	13166.00	99.92	13176.00	13166.00	99.92	13176.00	13166.00	99.92
Totals:		13643.95	12783.90	93.70	13862.59	12978.54	93.62	233127.03	218758.97	93.84
Stock Valuation:		495436.77								

OPTION: █										
Esc - Exit, N - Next Page, P - Previous Page, 'n' - Sales Type 'n', B - Branch, U - Stock Value										

Fig REL6-02

This functionality requires implementation by PSG. This will normally take five hours and will be chargeable at our prevailing rates.

As well as the conventional grouping of data at;

- the Delivery/Collect code level
- the branch level
- the product group level
- and the product level

this function introduces the optional Master Group level which allows the aggregating of associated ProdGroups. This concept of Master Group may not be exactly congruent with the existing use of GRANGE file ProdGroup relationships. The complete list of levels of resolution possible is:-

- Sales Type
- Sales Type*Branch
- Sales Type*Master Group
- Sales Type*Master Group*Branch
- Sales Type*Product Group
- Sales Type* Product Group*Branch
- Sales Type*Product
- Sales Type*Product*Branch

Each level details sales and cost values for day, period to date and year to date, plus the stock value corresponding to a given level.

GENERAL LEDGER - GLP

Detailed General Ledger Report – GLP.A3

The Nominal ledger enquiry can be configured to display either the supplier's invoice number or a voucher number.

A standard system will automatically pick up attribute 25 from PANALYSIS that is the voucher number for display in the enquiry. Only if you need to display the supplier's invoice number will you need to create the item JNL.ENTRIES.DOC.NO.PLP in the GLP.FORMAT file and set attribute 1 to 2 (2 being the attribute number in the PANALYSIS file which holds the invoice number). Otherwise do nothing.

WARNING * WARNING *** WARNING**

Since the use of this switch is effective only at related ledger posting time changing the switch will only affect new postings to the Nominal.

General Ledger Security

The new function GBALANCES.passwords (screens overleaf) allows the set-up of multiple levels of security, to allow tiered degrees of access restriction to the more sensitive GLP accounts.

Up to five levels of restriction are supported. The maintenance program is where the different levels of access are defined. Each tier in use should have a different password.

```

SYS REF: GLP          edp >>>> M E R C H A N T <<<<<      04/07/02  SCREEN 1
                    GBALANCES Access Control

A) Number of password protection levels required : 2

Password - level 0 : NO PASSWORD REQUIRED

1) PASSWORD - level 1 : PASSWORD SET
2) PASSWORD - level 2 : NEW SETTING
3) PASSWORD - level 3 : EMPTY
4) PASSWORD - level 4 : EMPTY
5) PASSWORD - level 5 : EMPTY

-----
Enter Option : U  Options: U - Update Password Details
                    A - Respecify Number of Access Levels Required
                    1-5 - Set or Reset the Password on an Access Level
                    <Escape> - Exit, no update

GBALANCES password access specification updated
    
```

The GLP.B3 GBALANCES Maintenance screen has a new option 'ACCESS' when the new security feature is enabled.

```

SYS REF: GLP0/MER    edp >>>> M E R C H A N T <<<<<      04 JUL 2002  SCREEN 1
                    GBALANCES MAINTENANCE

1) Company.. 1        ASG (EDP) PLC          4) Account Type
2) Location. 10      Milton Keynes          5) Account Classif.
3) G/L Code. 1100   SITE MAINTENANCE      6) Account Category

      THIS YEAR                LAST YEAR
      CLOSE BALANCE          DATES  Month          CLOSE BALANCE

7)          31+-----+
8)          31| ACCOUNT ACCESS LEVEL
9)          28+-----+
10)         31|
11)         30| Permitted Levels : 0-2
12)         31|
13)         30| Existing Level : 0
14)         31|
15)         31| Available options :
16)         30| Enter new level
17)         31| <ESCAPE> - to exit
18)         30|
19)         31| Enter Option :
                    +-----+

      Enter Y V Gn BUDGET BAL PA Pn or ACCESS  ACCESS
    
```

```

SYS REF: GLP0/MER          edp >>>> M E R C H A N T <<<<<      04 JUL 2002 SCREEN 1
                        GBALANCES MAINTENANCE

1) Company.. 1           ASG (EDP) PLC                4) Account Type
2) Location.. 10        Milton Keynes              5) Account Classif.
3) G/L Code.. 1100     SITE MAINTENANCE          6) Account Category

      THIS YEAR                LAST YEAR
      CLOSE BALANCE          DATES      Month          CLOSE BALANCE

7)                31/12/01      B/F
8)                31/01/02      1.    20)
9)                28/02/02      2.    21)
10)               31/03/02      3.    22)
11)               30/04/02      4.    23)
12)               31/05/02      5.    24)
13)               30/06/02      6.    25)
14)               31/07/02      7.    26)
15)               31/08/02      8.    27)
16)               30/09/02      9.    28)
17)               31/10/02     10.   29)

+-----+
| Enter password (Return with no input = level 0 access) : *** |
+-----+

```

Once a GBALANCES record has been ascribed a security level, further access to that account must be preceded by the entry of the appropriate level or a higher level password.

```

SYS REF: GLP3/MER          edp >>>> M E R C H A N T <<<<<      04/07/02  SCREEN21
                        TRIAL BALACE REPORT

Report Options :-

1. Current Period or selected Period (<CR>/Period No)
2. Year to Date or Period to Date (Y/P)
3. Print all or selected accounts (<CR>/Account)

+-----+
| Enter password (Return with no input = level 0 access) : *** |
+-----+

```

Once the new security is in use, all GLP3 menu functions to review ledger contents are restricted. Note that posting functions (GLP1 menu) are not inhibited, nor are any reporting functions other than on the GLP3 menu.

Additional features

Journal Entry Insertion - GL /10 - Screen redisplay issues on multi-screen journals have been resolved.

Related Ledger Postings - GLP.U6/GLP.U7 - when run in period 1, post-dated period 12 cash items were previously ignored by the posting programs. This omission has been resolved.

PRODUCT MAINTENANCE

Multi Product Select within Product Maintenance - SOP.S1 can support alpha retrieval of product. Where this capability is already in use this release now offers an additional feature - the ability to select multiple products for amendment. When the operator has confirmed update to the first product (Y at Option prompt) the next product from the pre-selected list is proffered automatically.

SYS REF: SOP.V5	edp >>>> M E R C H A N T <<<<<	14/11/01	SCREEN 1
PRODUCT SETUP			
Part Number	10. Weight		
1. Catalog No.	11. Decimal Places		
Description	12. Unit Keys		
2.	13. Hire (Y/N/B)		
3.	14. Price Book Seq		
4.	15. Matrix		
5.	16. Suppliers		
Report Name	17. Substitutes		
6.	18. Kit Details		
Keywords	19. On Promotion		
7.	20. Promo Prod		
8. Product Group	21. Desc Code		
9. VAT Code	22. Stock Desc		
AMEND an Existing or CREATE a New Product (A/C)? A			

Fig REL6-08

The prompt on the screen above illustrates the alpha retrieval feature is in operation. Should you choose to change your system to use alpha retrieval to adopt this new feature, be advised that all operators will be similarly prompted in product maintenance (including the sub options SOP.V1 – SOP.V5). Contact ASG to implement.

Product cloning is an optional feature in SOP.S1 - Product File Maintenance - is intended to facilitate and speed up the creation of new products.

```
SYS REF: SOP.V1          edp >>>> M E R C H A N T <<<<<    13/12/01    SCREEN 1
                        PRODUCT SETUP

  Part Number   MTR44
1. Catalog No. MTR44
  Description
2. LINTEL CONCRETE I 2000x950
3.
4.
5.
  Report Name
6. LINTEL CONCRETE I 2000x950
  Keywords
7. LINTEL
8. Product Group 130
9. VAT Code     2

                                CLONE PRODUCTS
                                > 1 MTR56

Are Usages and Receipt Histories to be Copied? : █

      8 - Move up list           D - Delete Current Entry
      2 - Move down list        I - Insert further products
      Y - Accept Entries         Esc - Cancel Entry
```

Fig REL6-19

A new prompt allowing the salvage of usage and receipt data is intended for use when a single product is being discontinued and superseded with a new code. This feature is not on offer where multiple new codes are being prepared.

New configurability permits cloning to automatically replicate customer price records and waste weight records.

To enable these features a new COMPANY record needs creating PRODUCT.CLONE.PARAMETERS with attribute 1 set to 'Y' if you want to suppress the creation of customer specific prices and attribute 2 set to 'Y' if you want to support cloning of waste weight details from the WASTE.PRODUCT.WEIGHTS file.

Product cloning is also enhanced to support cloning of sized products and timber products.

Inventory Location and Bin Code Maintenance – SOP.M16 A new facility is provided on the SOP.S9 Miscellaneous menu to enable maintenance of stores location and bin codes. This function is now entirely separated from all other maintenance activity and therefore may be devolved to warehouse staff with only limited data access rights. Branch specific password security is associated with the feature.

```

SYS REF: SOP.M16      edp >>>> M E R C H A N T <<<<<      04/07/02  SCREEN 1
                        STORES/BIN MAINTENANCE

Branch: I M K WHOLESale LTD

Line Product      Stk      Description      Stores      Bin
  1 COPQWE        Y  LINTEL CONCRETE I 2000x950    12         3924
  2 MTR32         Y  LINTEL CONCRETE I 2000x350     5         3912
  3 MTR34         Y  LINTEL CONCRETE I 2000x+-----+
  4 MTR36         Y  LINTEL CONCRETE I 2000x| Esc - Escape
  5 MTR38         Y  LINTEL CONCRETE I 2000x| Y - Accept
  6 MTR40         Y  LINTEL CONCRETE I 2000x| "n" - Amend Stores & Bin
  7 MTR42         Y  LINTEL CONCRETE I 2000x| S"n" - Amend Stores
  8 MTR44         Y  LINTEL CONCRETE I 2000x| B"n" - Amend Bin
  9 MTR44A        Y  LINTEL CONCRETE I 2000x| F/P/N/L - Display Pages
 10 MTR46         LINTEL CONCRETE I 3000x| PR - Accept and Print
-----+-----+
OPTION:

```

SOP.M16 Execution with Stk column display and new PR Option **Fig. REL6-14**

This program permits alpha select of products and allows conventional selection from the alpha matched range using line numbers in the 1-7 and 2,5,11 and 2-8,11 patterns. The alpha select will only present records where there is a pre-existing Inventory record for the relevant branch. Product code access is also allowed.

At Merchant sites where the BIN.CONTROL file is in use, this new feature will continue to prevent an INVENTORY item being coded with the same Bin reference as already used by another line at the same branch. However the feature will only act in batch mode, which is to say that if two or more lines within the same update are allocated the same Bin reference, which was not used at all prior to the SOP.M16 run, then joint use of the Bin reference will become possible.

This feature is NOT intended for use with multiple bin locations.

The PR option prints a change report as in the screen below.

```
SYS REF: SOP.M16      edp >>>>> M E R C H A N T <<<<<      14:58 04 JUL 2002 PAGE 1
                    CHANGES TO STORES / BIN LOCATIONS

Branch: I M K WHOLESALE LTD
```

Product	Stk	Description	Before Change		After Change	
			Stores	Bin	Stores	Bin
1 ABC88		LINTEL CONCRETE I 2000x950	F	6502	T	6502
2 COPQWE	Y	LINTEL CONCRETE I 2000x950	F	6502	T	6502
3 MTR32	Y	LINTEL CONCRETE I 2000x358	F	6503	T	6503
4 MTR34	Y	LINTEL CONCRETE I 2000x458	F	6504	T	6504
5 MTR36	Y	LINTEL CONCRETE I 2000x550	F	6505	T	6505
6 MTR38	Y	LINTEL CONCRETE I 2000x650	F	6506	T	6506
7 MTR40	Y	LINTEL CONCRETE I 2000x758	F	6507	T	6507

Sample of the SOP.M16 Bin Maintenance Report **Fig. REL6-14a**

Password control over access to this feature is exercised by use of program - STORES.BIN.PASSWORD - which creates a password record in the BRANCHn file called STORES.BIN.PASSWORD. For security reasons the password maintenance routine is not on any menu and therefore has to be run from UCL.

Product Maintenance -Auto product deletion routines – SPD.DEL8 now supports operation over 24 hours, that is, it recognises time change over midnight.

SYS REF: SPD.DEL		edp >>>> M E R C H A N T <<<<<	14/12/01	SCREEN 1			
SOP Batch Product Auto Delete - Step 1 (selection)							
Products	*	<table border="1" style="width: 100%;"> <tr> <td>Products ALL</td> </tr> <tr> <td>Product Groups ALL</td> </tr> <tr> <td>By Amend Dates ALL</td> </tr> </table>			Products ALL	Product Groups ALL	By Amend Dates ALL
Products ALL							
Product Groups ALL							
By Amend Dates ALL							
Product Groups	*						
By Amend date	*						
Start Time	21:00						
Finish Time	0630						
<table border="1" style="width: 100%;"> <tr> <td> Valid entries: a valid "last amended" date (PR99) , or * - all "last amended" dates R - a range of "last amended" dates B - before a "last amended" date Esc - exit to TCL Default is * (ALL) </td> </tr> </table>		Valid entries: a valid "last amended" date (PR99) , or * - all "last amended" dates R - a range of "last amended" dates B - before a "last amended" date Esc - exit to TCL Default is * (ALL)					
Valid entries: a valid "last amended" date (PR99) , or * - all "last amended" dates R - a range of "last amended" dates B - before a "last amended" date Esc - exit to TCL Default is * (ALL)							

Fig REL6-34

The convenience of this form of deletion is that the finish time means you can be certain of having your screen available for priority work tomorrow even if the list hasn't finished and you can complete the deletion task another night. (Here we're setting up for a completion time of not later than 06:30 am tomorrow.)

Sorted Alpha Tables created by SORT.PRODBUILD, are correctly updated when products are deleted. [Users who prefer to have their product alpha select screen sorted in some sequence other than product code – perhaps alphabetical sequence of report name – will be using the SORT.PRODBUILD utility within BUILD. Users who do not currently work this way but would like to explore this possibility should contact the Professional Services Group - PSG.]

Timber Products in Auto Deletion – The SOP.D3 menu now permits timber products to be deleted in the same manner as others.

DIARIES

Customer and Supplier Diaries can now both be triggered to be offered automatically in many routines. This enhances the speed of access to data that might be crucial in supporting the business function being undertaken and makes it less likely to be overlooked.

In addition to the Customer and Supplier Diaries, Release 6.0.3 introduces a new diary whose focus is a purchase order.

The role of the Credit History Diary is enhanced such that every time a customer is taken on or off stop, or there is an amendment to its credit limit, there is an automatic entry in this diary identifying when the change was made and by whom.

Customer diary information may be maintained at both invoice and statement account levels. Where preparing a sales order involving both a statement and invoice identity, any related invoice account diary detail will be displayed; otherwise the statement account diary detail will be shown.

The display of diaries is controlled mainly by the following item;

>CT COMPANY DIARY

- 001 Y - must be set to 'Y' to enable the SOP diary functions
- 002 65 - controls the width of the credit control diary (DY1)
- 003 65 - controls the width of the sales control diary (DY2)
- 004 65 - controls the width of the sales misc text (DY3) and supplier diary
- 005 - not used
- 006 65 - controls the width of the credit history diary (DY5)
- 007 - not used
- 008 - not used
- 009 - not used
- 010 Y - must be set to 'Y' to enable the POP/PO1 diary function
- 011 n } - where n = A - automatic display
- 012 n } - X - do not display
- 013 n } - N - display the question with a default of "N"
- Y - display the question with a default of "Y"
- att 11 relates to DIARY1 (Credit Control Diary)
- att 12 relates to DIARY2 (Sales Control Diary)
- att 13 relates to DIARY3 (Misc. Text Diary)
- 014 - not used

- 015 - not used

- 016 - not used
- 017 n - as attributes 11/12/13

The COMPANY item DIARY only affects the behaviour of diaries within sales and purchase order processing that have already been enabled. If the sales order processing diaries need enabling please contact Application Support.

If the purchase order diary is to be triggered automatically then install AUTO.DIARY.PO in the PRESUPPUFOS item in the POP.FORMAT file. (It is still possible to ask to see the supplier diary in PO1 by entering 'DY' even where auto diary has not been enabled.)

SUPPLIER DIARY WITHIN SALES ORDER PROCESSING

Additionally supplier's diary can be configured for auto display in the following sales order processing areas, by creating COMPANY item AUTO.DIARY.PO.SOP attributes 1 to 5 as follows

- Att 1 Y for supplier diary display in new directs
- Att 2 Y for supplier diary display in old directs
- Att 3 Y for supplier diary display in new quotes
- Att 4 Y for supplier diary display in allocation/back-to-back
- Att 5 Y for supplier diary display in specials

PURCHASE ORDER DIARY

A new purchase order diary is available and can be maintained via SOP.DY6, or via the DY option on the final screen of a PO1 purchase order. The diary can be viewed and updated in goods receipt and purchase invoice matching. You can choose to access the PO diary display at the start and end of goods receipt and the start and end of purchase invoice processing. Configured as follows COMPANY item PO.DIARY

- 001 n
 - 002 n
 - 003 n
 - 004 n
- } where n = A - automatic display
X - do not display
N - display the question with a default of "N"
- Y - display the question with a default of "Y"

Att 1 controls the display after entering 'Y' at the option prompt having completed the entry of a purchase order identity at the **start** of goods receipt (POP.R1)- but the choice is only offered where diary data exists.

Att 2 controls the display at the **end** of goods receipt after the GRN number has been given.

Att 3 controls the display after entering 'Y' at the option prompt having completed the entry of a GRN at the **start** of purchase invoice processing (POP.I1).)- but the choice is only offered where diary data exists.

Att 4 controls the display at the end of purchase invoice processing.

The content of the purchase order diary will share the DIARY3 file (together with supplier diary entries and miscellaneous text diary entries). PO diary entries will take a key in the format of PO*MKP267.

The diary password limitation does not control these new access points to diary data within Goods Receipt and Purchase Invoice Processing. (Just as passwording does not operate within sales or purchase order processing and neither does it operate within SOP.DY maintenance functions. Password operation does however, restrict diary access within ledger enquiry functions and cash allocation.)

CREDIT HISTORY DIARY

The STOP.FLAG utility creates entries in the Credit History Diary (DIARY5) whenever changes are made to the stop flag, credit code or credit limit. On a network environment the operator making the change is identified by their user name whereas in a non-networked implementation, their port number identifies them.

If the STOP.FLAG utility is used more than once in the day then the existing diary entry is expanded with additional text; this can be readily understood as the time of each entry is also included. The diary can be examined using SOP.DY5 on the SOP.M11 menu.

Changes to the Customer record made by the use of the Amender utility do not update the diary nor does the execution of SOP.X2 - "Update Customer With Credit Status Codes".

```

SYS REF: SOP.DY5      edp >>>> M E R C H A N T <<<<<      13/12/01      SCREEN 1
                        DIARY MAINTENANCE

Credit History Diary

15/11/01 Credit Code was 4, now amended to Y at 17:02 (PHC).Account taken
off stop at 17:02 (PHC).
14/11/01 Credit Limit was 8250, now amended to 7000 at 15:41 (JSMITH).Cred
it Code was 3, now amended to 4 at 15:41 (JSMITH).Account put on
stop at 15:41 (JSMITH).

command mode Esc - exit
(C)opy to printer (M)essages
(I)nsert new entry (T)op
(K)ill an entry (B)ottom
(E)dit an entry (N)ext (P)rev
    
```

Fig REL6-12

PURCHASE INVOICE PROCESSING

Purchase Invoice Processing is enhanced to make the selection of matching GRN's more streamlined. The intention has been to clearly mark records that are most likely to be selected for matching in defined ways, and to allow the complete removal from display of already matched data.

When using the LIST and GRN options to select unmatched GRN's, potential matches maybe marked as follows

- * indicates GRN's that have been invoiced
- # indicates GRN's that have been cancelled, that is the 'CO' option used in POP.R1 (could be shown as £ on some screens).
- p indicates that the invoice has been partially matched, that is if the goods receipt was for £100.00 but only £80.00 has been matched."

However, users who rarely purge their purchase orders may have very long lists of already matched GRN's. A new control suppresses the display of already fully invoiced GRNs. The item POP.I1.GRN.SUPPRESS in the COMPANY file needs to contain a 'Y' in attribute 1.

```
SYS REF: POP.I1          edp >>>> M E R C H A N T <<<<< 19/04/01  SCREEN a
PURCHASE INVOICE PROCESSING
Page 1
-----
```

	G.R.N. Number	Date	S.A.N. Number	Purchase Order	Date	Lines
1:	MK151	02/04/01	MK151	MKP267	02/04/01	1
2:*	MK152	19/04/01	MK152	MKP268	19/04/01	1
3:	MK153	19/04/01	MK153	MKP269	19/04/01	1
4:£	MK154	19/04/01	TRE457	MKP302	19/04/01	1
5:p	MK155	22/04/01	TRE166	MKP270	19/04/01	2
6:*	MK156	19/04/01	MK156	MKP303	19/04/01	1

```
-----
OPTION: █
```

Fig REL6-04

The POP.I1 screen has also been amended as follows:

- If you don't select a GRN in the LIST manner but just enter its identity at the 'Goods Receipt Note' prompt, then the Goods Receipt date is now shown against the Goods Receipt note number.
- When using the 'AS' option to select an alternate supplier the system displays a warning message reminding the operator to check the terms are still appropriate.
- In order to support the analysis of purchases where goods have been sourced from a division of a large corporation, that is, where there is a source of goods supplier and a separate payment supplier, both on the supplier file, the goods supplier id is now written to PANALYSIS attribute PA47 and to PLEDGER attribute PL42 - (note that most often the expectation is that the one supplier identity will fulfil both roles - as source of goods and payee - but the fields mentioned will still be used). This would mean that a report could be prepared showing not just how much was bought from a Supplier but how much from the various divisions within this Supplier.
- When processing Supplier Invoices for consumable purchases - entry of 'CONSUMABLE' in the GRN reference field of POP.I1, screen 1, allows completion of a 'receipt' function, similar to POP.R1. Naturally the 'Goods In' activity is not fully executed as it is vital the goods do not actually go into stock.

Directs - a new feature is now available to remind the operator of the identity of a sales transaction when the supplier invoice arising out of a direct purchase has been completed in POP.I1.

The feature may also be extended which will allow for immediate invoicing of the Direct Sales Order, by automatic conversion of the Direct Order to a Direct Invoice.

If required contact the Application Support Group (ASG) for assistance.

```

SYS REF: POP.I1      edp >>>> M E R C H A N T <<<<< 23/04/01  SCREEN 1
                    PURCHASE INVOICE PROCESSING
Supplier:           CANDY CANDY
Goods Receipt Note: MK166
Supplier Advice Note:
Supplier Invoice:   345/7
Invoice Date:      23/04/01
Voucher Number:   345/7
                    Invoice          Receipt Value      Difference
                    -----          -
Goods:             1500.00          1500.00
Carriage:
Other Charges:
VAT:               0.00
Curr ST Total:    1500.00
-----
OPTION: Y
DO Order: MK035
Branch: 1          M. K. WHOLESALE Ltd
Customer: CANDY   CANDY OVENDEN-HALL
DIRECT Order Available for Invoicing/Conversion - OK to Continue

```

Fig REL6-05

The Accruals Listing (POP.P6) - identifying Goods Receipts which have yet to be matched to supplier's invoices - is now reformatted to provide sub-totals by supplier.

PURCHASE LEDGER PROCESSING - PLP

Duplicate Invoice Test within Invoice Posting and Credit Posting - PL/10, POP.I1 and PL/20

A new Duplicate Invoice Detection function can now be installed to test if a supplier's invoice has already been posted to the account. Tests are conducted against the current ledger file and historic ledger file. The prevention of erroneous double posting is obviously a key safeguard against the possibility of double payment.

The feature combines with existing Merchant functions which allow automatic Voucher number generation and matching against the Voucher Register to check for an existing entry.

This feature requires approximately 1 hour of Professional Services implementation.

VAT Report - PLP.R3 - A Grand Total page is provided allowing for net of invoice and credits.

Diary - access to all diaries is available from cash clearance screens and enquiry routines via DYn option. (For further information on diaries see the section on page 28.)

PURCHASE ORDER PROCESSING - POP

Consumable Products - Merchant supports a new class of product; consumables. A consumable is a product not intended for re-sale but just required to run the business. Computer report paper would be a typical consumable.

The identification of some products as being consumables will assist the procurement process by allowing the use of standard and familiar processes in order creation and order chasing without contaminating sales stock.

Purchase ordering requires that an operator select as to whether the order is for consumable products or otherwise.

SYS REF: P01		edp >>>> M E R C H A N T <<<<<		15/11/01	SCREEN 3
PURCHASE ORDER ENTRY					
Supplier	CAZZERS SUPPLIERS LTD		CRIMINAL COURT BUILDINGS	CAREY STREET	OXFORD
Supplier	EDP (ASG) PLC(POP)		SUNRISE PARKWAY	LINFORD WOOD	MILTON KEYNES
	BUCKS		MK14 6LJ		
DX8 P44	Currency		ST GBP		
Telephone No	01321 283211	Comments			
Contact	CAZ	Terms	2	LESS 6%	
Order Date	15/11/01	Ordering Branch	1	M. K. WHOLESALE Ltd	
Required Date	15/11/01	Discount Cat			
Min Order Val	Carr Paid Terms				

Consumables Order? (Y/N) <input type="checkbox"/>					

Fig REL6-16

This feature requires implementation, please contact ASG for further details.

SYS REF: SOP.V5		edp >>>> M E R C H A N T <<<<<		13/12/01	SCREEN 1
PRODUCT SETUP					
Part Number	VRE00.1	10. Weight	2.200		
1. Catalog No.	VRE00.1	Stock Type		Consumable	
Description					
2. PAPER TOWELS - 500 PK					
3. DIS-INFECTANT IMPREGNATED					
4.			14. Price Book Seq		
5.			15. Matrix		
6. PAPER TOWELS			16. Suppliers		
7. TOWELS			17. Substitutes		
8. Product Group 88			18. Kit Details		
9. VAT Code 2			19. On Promotion		
			20. Promo Prod		
			21. Desc Code		
			22. Stock Desc		
			PK 500		
T - Defines product as standard 'To.Stock' C - Defines product as non-stock 'Consumable' null entry - Use default (Current default = 'C')					

Fig REL6-20

The above screen is the result of using the 'S' option within product maintenance to mark a product as consumable. Size products may not be marked as consumables. PO2 and BOP will not allow the selection of consumable products.

Product Maintenance SOP.V1 would normally lead an operator through four screen types Product Set-up (as above) Inventory Set-up, Price Set-up and B.Details Set-up. With Consumable products stocking information i.e. Inventory data is inappropriate and similarly Price data is not needed since this product is not for sale. Accordingly SOP.V1 will only give access to the Product and B.Details Set-up screens.

Having selected to make a given order 'Consumable' in PO1 then all products selected for purchase must be consumables. Failure to select the correct type of product will produce the sort of error:-

Product 'MTR32' is not a non-stock consumable (order is non-stock)

And similarly when making stock purchase orders the operator cannot select consumables although such lines will still be presented in alpha matched product searches.

Goods Receipt is performed for Consumable PO's but the delivery doesn't go into stock. The receipt is merely a method to facilitate Supplier Invoice matching. The setting of a product to a consumable status could be done at a time when there is stock already on the system. This is no problem to Merchant. Stock can be removed using standard stock adjustment programs SCP1 SC.1A.

Purchase Order Entry - PO1 Pack Size The manual Purchase Order function has now been enhanced to warn operators where the quantity on order is not a convenient multiple of the supplier's Pack Size. For example :-

WARNING: Order Quantity should be a Multiple of Pack Size 10

This reminder will avoid the unexpected costs of split pack charges and brings the Purchasing side in line with the SOP behaviour. Note that the Pack Size field only needs to be set in order to trigger such warnings. The Pack Indicator field on the B.Details Maintenance screen is not used.

Closed Supplier Accounts – A supplier account can be marked as closed by entering the value CLOSED into field SU33 using Amender. Any account so identified will not be acceptable for manual purchase order creation – PO1 or suggested reordering via PO2. In addition closed suppliers are clearly distinguished in the POP.E9 enquiry.

Exchange Rate Capture - The ER option is only available in PO1 when preparing a PO for a foreign currency supplier. Accuracy to 4 decimals is permitted. Field PO45 in the PORDER record stores the data. If entered here the Exchange Rate figure will be used at Goods In Time to convert purchase cost into base currency. Otherwise the system uses whatever standard Exchange Rate is prevailing for that currency at Goods In time.

POP.E8 Purchase Order Enquiry – Detail screen - will distinguish the Exchange Rate figure as '[Variable]' when the ER function was not used and just the plain figure where ER was used.

The first possible moment, for when the intelligent provision of a future need for foreign currency arises, is when the PO is created. The simultaneous entry of an anticipated exchange rate means the performance of currency hedging can now be computed.

SYS REF: PO1	edp >>>>	M E R C H A N T <<<<<	15/11/01	SCREEN 6
PURCHASE ORDER ENTRY				
TOTALS	€	CSD 24.00		
GOODS		400.00		
CARRIAGE		0.00		
VAT		0.00		
ORDER TOTAL		400.00		

Enter DOLLARS Exchange Rate:				

Fig REL6-15

Purchase Order Enquiry – POP.E8 – This enquiry now displays a 'C' to the right of the 'received quantity', if in the goods receipt process – POP.R1 – a line is considered complete.

REBUILD.GRN.LINKS - Some Merchant users may have had occasion to execute this utility without prior discussion with ASG. Changes have been made to the routine which necessitate the existing file is NOT cleared before the program is run. In essence Edp's advice is rather than choose to run this utility of you own volition you should always contact ASG.

Purchase Order Reprint – POP.P4 now supports the alpha selection of supplier.

REMOTE ORDER ENTRY - ROE

New ufo slots have been introduced within the ROE module in the following areas:

Order header screen - allows for introduction of bespoke routines for;

- credit messages
- control of delivery address
- delivery information schedules

order line – which allows for introduction of ufos for;

- margin checking
- running order totals
- more detailed availability information
- price & discount amendment

All of these new features require specification by the Professional Services Group (PSG).

STOCK CONTROL - SCP

Stock Transaction Processing – SC.1A – the main module has been enhanced to provide new ufo slots for:

- **access control** – specific user requirements
- **document printing** – mechanism now available for introduction of User print / fax programs

A late feature of release 5.2.1 was the ability to classify more easily adjustment reasons by pulling in some standard reason text from the ADJUST.REASONS file. This file has to be maintained through Amender. The benefit of setting up the file is to give reassurance to the operator that they have chosen a valid reason and to ensure consistency in the way adjustments are recorded, thereby allowing intelligent reporting from the audit files. This feature is only relevant to the SC.1A transaction type 'A'.

All reason text is now visible in stock record enquiry – SOP.E4

Stocktake List Print - SCP.T2 - this standard print can now be configured to output in bin number sequence. To implement this choice please contact the Application Support Group. Please note that many users may already be using a bespoke version of this print and therefore are unable to benefit from this change.

Stock Valuation - SCP.R46 This report is now reformatted to handle increased value fields.

Product Group Valuation Report - SCP.R47 - amendments provided to suppress zero value products and product groups.

SALES LEDGER PROCESSING - SLP

COD Account Payment SOP.T4 and SOP.T5 - The SOP8 Cash Drawer Analysis menu has had its title changed to Cash Drawer Routines and now supports two new features which allow easy payment of COD (Cash-on-Demand) account transactions.

This new capability allows a defined way of treating COD's and one that is expected to be simple enough to be dealt with by sales staff rather than ledger clerks. The cash taking mechanism is fast and uncomplicated and uses routines familiar to the sales staff so ensuring a minimum training effort. Essentially the new function allows a sales operator to use the Sales Order Entry end-of-order cash payment screen even though the sales order will have been complete hours or days beforehand.

SYS REF: SOP.T4	edp >>>>	M E R C H A N T <<<<<	19/12/01	SCREEN 1
PAYMENT ENTRY				
Invoice	MKI683			
Customer	PHC CONSTRUCTION	Branch	1 M. K. WHOLESALE Ltd	
Ordered	18/12/01	Invoiced	18/12/01	
Delivery	PHC CONSTRUCTION LTD	Invoice Goods	80.63	
	SLATER QUARRY	Surcharges	0.00	
	ST EDMUNDS ESTATE	V.A.T.	14.11	
	CHURCH END LANE			
	BERKHAMPSTEAD	Invoice Total	94.74	
	BUCKS			
	BK7 D61			

Correct Invoice (Y/N) ?				

Fig REL6-21

Each COD customer must be individually identified. Once the customer is so identified, any outstanding SOP invoice could be paid by this new routine. Any transaction that existed before the Release 6.0.3 upgrade or any transaction that existed before the customer was classified as COD would still qualify as long as that transaction is not either paid or part paid and is not future dated.

Only credit customers that are designated as statement accounts can be classified as COD accounts. It will still be possible to use all existing sales ledger payment routines on the COD accounts.

The creation of a sales order is unchanged by this new feature. All that's different is the payment activity. Payment must be in full. If the operator's screen is set to normally make cash entries in the AUDIT.TILL file then this new payment mechanism will also create such records suitable for reporting within the Till Audit Reports SOP.T1 and SOP.T2. Any COD records not yet paid for can be printed in a COD Outstanding Invoices Report SOP.T5.

Users wishing to implement this feature should anticipate a Professional Services charge of approximately one hour, part of which may be a discussion concerning changes to order document print programs.

Diary - access to all diaries is available from cash clearance screens and enquiry routines, via DYn option.

Batch Amendment - SL/@ and PL/@

Restrictions have been relaxed to allow existing invoice/credit items to be amended in a system configured for full currency, providing that the batch is in the base currency. If the invoice/credit batch is for other than the base currency then new transactions can be added but the existing contents may not be amended. [To allow amendment could result in currency gain/loss which has already been calculated.]

The system will now also allow batch amendment of unallocated cash batches using SL/@ or PL/@ providing that the transaction has not already updated either the Nominal ledger or the Cashbook.

Direct Debits – SLP8 - Where a customer has paid via direct debit these items are marked with "D" in SLP.2A and SLP.2B Enquiry and Cash Clearance screens, and are not available for clearance in cash allocation. When selecting a Direct Debit customer in SL/30 Cash Payment the operator is informed

*** Warning - Customer is set for Direct Debits

```

SYS REF: SLP1/MER      edp >>>> M E R C H A N T <<<<<      14/12/01      PAGE 1
SALES LEDGER INPUT    SL/30 CASH (OPEN ITEM)
  
```

1. Account	PHC100	PHC CONSTRUCTION LTD	
2. Reference	RWFC	4. Amount	488.66
3. Date	14/12/01	5. Discount	

	Reference	Type	Date	Csd date	Csd value	Balance	Action	Part	Paid
1)	MKI498	IN	21/02/01			723.55			
2)	41877	BA	21/04/01			21.21			
3)*	154	BA	25/06/01			85.36			
4)*	1567	BA	18/07/01			657.32			
5)#	4754	BA	24/08/01			566.82		57.32	
6)D	4501	BA	26/09/01			12.80			
7)	5994	BA	07/10/01			67.40			
8)	782	BA	08/10/01			96.00			
9)	680	BA	12/10/01			115.00			
10)	766	BA	12/10/01			74.00			
11)	799	BA	12/10/01			85.36			
12)	4700	BA	12/10/01			78.00			
							INPUT		488.66
							POSTED		

Fig REL6-35

The above cash payment screen shows a Direct Debit paid line as well as two 'conventionally' paid lines and a part payment.

VAT Report - SLP.R3 - A Grand Total page is provided allowing for net of invoice and credits

Sales Ledger Enquiries – SLP.2A/SLP.2B – the print option has now been enabled for the 'hold' ledger enquiry. If the customer is selected using an entry of **PHC100** then the display will show the current ledger details for that account and the 'P' option will print the current ledger. If the customer is selected using **PHC100\H** then the display will show the 'hold' ledger and the 'P' option will print the hold ledger (all records with an asterisk meaning cleared).

Currency Rate Setup and Amendment - PLP.U11/SLP.U11 - This feature now supports a password to limit access, and the maintenance of that password is by a UCL executable command;

`Currency.password`

which will expect a minimum of a five character entry.

SALES ORDER PROCESSING - SOP

Selling in Currency - Sales Order Screens. There has been a full revision of all screens to display currency information, when configured for currency selling. Two particular places where you will see evidence of this is adjacent to the 'Price cat' on the customer confirmation screen and adjacent to the 'Totals' title at the 'end of order' screen.

SYS REF: SOP/SI		edp >>>> M E R C H A N T <<<<<		21/12/01	SCREEN 6
SALES INVOICE					
Product MTR34		\$ Price		Act	920
LINTEL CONCRETE I 2000x450		100.00		Free	304
		Disc 1	0.00%	Per EACH	
		Disc 2	0.00%	Stock Unit Each	
		Disc 3		Ordered	6
Catalog No. MTR34		No CSD		Despatched	6
Bin number. F/3914		Nett Price	100.00	Outstanding	0
Prod Group 130	CONCRETE LINTELS				
		Nett Cost	51.33	Per Each	
				Margin %	48.67
				Mark Up %	94.81
PRODUCT OPTION: █					

Fig REL6-37

The above sales screen includes details of the 'Negotiator' display presenting Margin and Mark Up percentages and a 'Nett Cost' display. This Nett Cost is a replacement cost at unit level, and for a currency sale the figure is the replacement cost in currency. If the preferred supplier is not of the same currency, then the cost of the preferred supplier is converted to the appropriate currency – using the SLP.U11 Exchange Rate where available.

If the customer is a currency customer and the preferred supplier is a currency supplier but the customer and supplier do not share the same currency then there is first a conversion to a Sterling cost and then into the customer's currency.

Similarly if your Merchant system is set to display the cost details when there is an infringement of the low margin level, the cost displayed will be computed in the customer's currency.

[If you are not configured for currency then an implementation of at least one day would be expected but there may need to be an earlier consultancy session to determine just what scale of currency operation is necessary.]

Reps Target Reporting - A new function is provided for rep performance monitoring. This allows specification of reps targets by month, with supporting enquiries for comparison against actuals.

SYS REF: SOP		edp >>>> M E R C H A N T <<<<<		15/11/01		SCREEN 2	
REP TARGETS AND SALES - CURRENT YEAR							
Rep. : AS ALAN SPOONER				Financial Period : 11			
Period	Sales	Target	% Target	Margin	% Margin		
1	8,250	15,000	55.00	1,995	24.18		
2	9,548	12,000	79.57	1,497	15.68		
3	10,658	12,000	88.82	3,110	29.18		
4	16,548	9,000	183.87	3,948	23.86		
5	15,215	10,000	152.15	2,168	14.25		
6	15,000	15,000	100.00	1,422	9.48		
7	14,578	16,000	91.11	3,621	24.84		
8	8,015	19,000	42.18	1,890	23.58		
9	18,562	18,000	103.12	5,014	27.01		
10	11,473	15,000	76.49	1,898	16.54		
11	11,676	15,000	77.84	2,129	18.23		
12		(15,000)					
Total	139,523	156,000	89.44	28,692	20.56		
Enter Option (L, P or Esc) : _							

Fig REL6-17

Above shows the Rep specific achievement for the year up to period 11 displayed alongside target. (Our rep - Alan Spooner - is notably below target on the year so far!) Targets are only established for sales and not for margin. Note the options to 'P' print, or 'L' to select a similar display for the prior year.

The data in the REP.TARGETS function is contained in a file of that name.

- Att 1 -12 Period Sales for current year
- Att 16-27 Period Costs for current year
- Att 31-42 Period Sales for previous year
- Att 46-57 Period Costs for previous year
- Att 61-72 Target Sales Current Year
- Att 76-87 Target Sales Previous Year

```
SYS REF: SOP          edp >>>> M E R C H A N T <<<<< 15/11/01  SCREEN 3
                REP TARGETS ENTRY

Rep. : AS ALAN SPOONER                               Financial Period : 11
                ---- Last Year ----                ---- Last Year ----
Per.  Target   Target   Sales   Per.  Target   Target   Sales
 1.   11,500   8,926   7.   12,500  12,457
 2.   12,000  11,548  8.   11,500  14,788
 3.   13,000  16,046  9.   11,500  12,046
 4.   13,500  14,575 10.   9,000   10,025
 5.   13,500  13,549 11.   9,000   8,655
 6.   12,500  12,015 12.  10,500  7,846

                Annual Target

-----
Do you wish to enter targets by period or spread a year target? (P/Y) :
```

Fig REL6-18

The loading of Reps Targets is performed with the utility above. The work should be performed in the first period of the new year as it is not possible to prepare a future year target plan. The screen offers a choice of how the target may be loaded. If you choose 'P' for Period then you have to enter a value for each month. If you choose 'Y' then you enter a total year value that the system splits into 12 equal amounts. Visiting and correcting given periods, can then adjust this flat rate.

This feature is not incorporated into the Merchant menu structure. Since the update of the file requires new code to be installed there is a formal implementation procedure at which time the key functions can be installed on user menus. The PSG team will be needed to perform the implementation and you should assume a charge of about 1-2 hours as part of a site visit.

Branch/Product Enquiry SOP.E5 – An additional column identifies the quantity of stock in quarantine.

Product File Enquiry SOP.E21 - now alerts the user that a product specific message exists.

SYS REF: SOP.E21		edp >>>> M E R C H A N T <<<<		15/11/01	SCREEN 1
PRODUCT ENQUIRY SCREEN					
Part Number	VRE00.1	Weight	2.200		
Catalog No.	VRE00.1	Decimal Places	0		
Description	PAPER TOWELS - 500 PK	Unit Keys	No		
	DIS-INFECTANT IMPREGNATED	Hire	No		
		Price Book Seq	*None*		
		Matrix	*None*		
		Suppliers	Yes		
Report Name	PAPER TOWELS	Substitutes	No		
		Kit Details	No		
Keywords	TOWELS	On Promotion	No		
		Promo Prod	*None*		
Product Group	88 - MISCELLANEOUS	Desc Code	*None*		
VAT Code	2 - 17.50%	Stock Desc	PK 500		
Bar Code No.	Yes	Discontinued	No		
		Serial Nos.	No		
		Stock type	Standard		
MESSAGE - use MI to view					

OPTION:					

Fig REL6-19

SOP.E21 is also enhanced with a new TI option allowing review of the set-up details for a timber line – See timber section on page 65.

Inventory Enquiry - SOP.E7 - a new option, 'OS', Outstanding Sales Orders, is now available detailing the information as in this sample screen.

```
SYS REF: SOP.E7          edp >>>> M E R C H A N T <<<<<      15/11/01  SCREEN 2
                INVENTORY ENQUIRY
                OUTSTANDING SALES ORDERS                               Page 1 of 1
Product MTR32          Branch 1 M. K. WHOLESALE Ltd
LINTEL CONCRETE I 2000x350
Order      Line Type Customer          Order      Required  Quantity
          Date      Date      Date      Date      Ordered
MKD293    1 DN  PHC CONSTRUCTION      26/10/01   05/11/01     4
MKD307    1 DN  PHC CONSTRUCTION      15/11/01   15/11/01    12
MKD356    1 DN  PAM AM                    15/11/01   25/12/01    50

OPTION: █
```

Fig REL6-20

A 'T' toggle option is available to show price and discounts and net value. As you can see from this example where one of the lines is in currency this will be identified.

```

SYS REF: SOP.E7          edp >>>> M E R C H A N T <<<<<      15/11/01   SCREEN 2
                        INVENTORY ENQUIRY
                        OUTSTANDING SALES ORDERS                Page 1 of 1
Product MTR32          Branch 1 M. K. WHOLESALE Ltd
LINTEL CONCRETE I 2000x350                                     Each
                                                                GBP
Order   Line Type    Price   Per          D1%  D2%  D3%  Line Value
MKD293   1 DN         61.50   EACH         8.00 0.00          226.32
MKD307   1 DN         61.50   EACH         8.00 0.00  5.00   430.01
MKD356   1 DN         89.50£  EACH         0.00 0.00           0.00
    
```

OPTION:

Fig REL6-21

Also within SOP.E7 the D option to display purchase order line detail is enhanced. The first enhancement concerns a control to govern the inclusion of fully delivered lines. This control may be set to always include such PO lines, to always exclude, or as here to ask the operator's choice at execution time.

```

SYS REF: SOP.E7          edp >>>> M E R C H A N T <<<<<      13/12/01  SCREEN 2
                INVENTORY ENQUIRY
                PURCHASE ORDERS DISPLAY
Product: MTR34 LINTEL CONCRETE I 2000x450
Order      Line Type Supplier          Order      Quantity Due      Each
          Date      Ordered Date      Quantity
          T/F

INCLUDE Fully Received Order Lines (Y/N) ? 
    
```

Fig REL6-30

Once within the D option the display is also amended. The display shows the order delivery date. In the **example below** the asterisk against the top line signifies that a T option has been used in PO1 Purchase order entry to amend the expected delivery date. This would not be unusual for part delivered lines.

```

SYS REF: POP.E3          edp >>>> M E R C H A N T <<<<<      13/12/01  SCREEN 2
                INVENTORY ENQUIRY
                PURCHASE ORDERS DISPLAY
Product: MTR34 LINTEL CONCRETE I 2000x450
Order      Line Type Supplier          Order      Quantity Due      Each
          Date      Ordered Date      Quantity
          T/F
Supplier Delivery*
BRANCH 1  M. K. WHOLESale Ltd
MKP433    1 P01 CAZZERS SUPPLIES          14/09/01      80 15/02/02*    45
MKP521    1 P01 CAZZERS SUPPLIES          08/02/02     100 23/02/02     100
MKP522    1 P01 ARKANSAS MILLING           13/12/01     150 08/01/02     150
MKP523    1 P01 ARKANSAS MILLING           13/12/01     120 07/02/02     120
MKP524    1 S  ARKANSAS MILLING           13/12/01     117 07/02/02     117

OPTION:
    
```

Fig REL6-32

A further T – Toggle – option will then produce a screen as follows:-

SYS REF: POP.E3		edp >>>> M E R C H A N T <<<<<		13/12/01		SCREEN 2	
INVENTORY ENQUIRY							
PURCHASE ORDERS DISPLAY							
Product: MTR34 LINTEL CONCRETE I 2000x450							Page 1 of 1
							Each
		Nett		Exchange		Calculated	
Order	Line Type	Price	Per	Currency	Rate	Cost	
BRANCH 1	M. K. WHOLESALE Ltd						
MKP433	1 P01	29.99	EACH			28.1906	
MKP521	1 P01	27.14	EACH			25.5125	
MKP522	1 P01	41.25	EACH	₹	1.6500 V	23.5000	
MKP523	1 P01	51.33	EACH	₹	1.4221	33.9288	
MKP524	1 S	51.33	EACH	₹	1.6500 V	29.2426	
OPTION:							

Fig REL6-31

In the above a V in the Exchange Rate column signifies the ER function was not used in the PO creation – the exchange rate will be variable. For the 'S' type system created PO this could not have been possible but it is a choice in the manual PO1 style of order.

Invoice / Credit Displays SOP.E15 - In SOP.E15, Hold Invoice/Credit history enquiry, new options are introduced. The EQn and EQUn options allow drill-down to other enquiry functions.

The U option allows display of one of the user data fields, stored in one of SORDER attributes SO65 to SO68.

```
SYS REF: SOP.E15      edp >>>> M E R C H A N T <<<<<      04/07/02  SCREEN 3
                        HOLD ORDER ENQUIRY

Invoice To              Deliver To
PHC CONSTRUCTION LTD   PHC CONSTRUCTION LTD
SLATER QUARRY          SLATER QUARRY
+-----+              +-----+
| < OPTION HELP >    | ST EDMUNDS ESTATE
| Esc - Escape from  | | CHURCH END LANE
| this Enquiry       | | BERKHAMSTEAD
| N - Display the    | | BUCKS
| Next Order         | | B17 D81
| Y - Display the    | | Comments  ALWAYS CHECK WITH PSA
| Next Screen        | | Terms
| C - Display        | | Price Cat.   1
| Associated Credits | | Credit Limit 25000 4680
| HS - Display       | | Stock Branch 1  M K WHOLESALE Ltd
| Order History      | | Discount Cat
| EQn - Enquiry(n)   | +-----+
| EQUn - User Enquiry(n)
| U - User Field Enquiry
+-----+

OPTION:
Operator      : Candy Ovenden-Hall      Customer Order :
Document Number : MK1752                Order Category  : SI
Despatch Goods : 1000.00 + 175.00 VAT    Despatch Value  : 1175.00
```

Only a single field can be presented. Configuration of this mechanism is in the SOP.FORMAT record ALT.SOP.E15.DISPLAY. The att 10 of this record dictates which HOLD.SORDER field shall be displayed. Only values of 65 to 68 inclusive are legal. Att 11 holds the title of that field which is presented in the display box. Att 12 and 13, if used, are two multi-valued strings with corresponding elements. In 12 are the possible values that can be encountered in the HOLD.SORDER field and in 13 is the list of text strings that would be presented to explain the value field.

- 010 66
- 011 Capture Method
- 012 T]P]F]R]O
- 013 Telephone]Post]Fax]Reps Order]Other

If atts 12 and 13 are not used, or if a value in the presented attribute is discovered for which att 12 has no match, then the new feature simply displays the field contents.

```

SYS REF: SOP.E15          edp >>>> M E R C H A N T <<<<<          04/07/02  SCREEN 3
                          HOLD ORDER ENQUIRY

Invoice To                Deliver To
PHC CONSTRUCTION LTD     PHC CONSTRUCTION LTD
SLATER QUARRY            SLATER QUARRY
ST EDMUNDS ESTATE        ST EDMUNDS ESTATE
CHURCH END LANE          CHURCH END LANE
BERKHAMS+-----+
BUCKS | Capture Method |    BUCKS
B17 D81 | Rep's Order   |    B17 D81
Tel    +-----+
Contact
Rep          124 TIGGER
Area
Van Route    1 North and Luton
Invoice Date 12/07/02
-----+
Press <cr> to clear.
Operator      : Candy Ovenden-Hall      Customer Order :
Document Number : MK1752                Order Category : SI
Despatch Goods : 1000.00 + 175.00 VAT   Despatch Value : 1175.00
    
```

Customer Price History Enquiry SOP.E19 - the number of history records maintained has been increased to 15 and accordingly the size of the CUSTOMER.PRICE.HISTORY file will grow markedly.

SYS REF: SOP.E19		edp >>>> M E R C H A N T <<<<										13/12/01		SCREEN 1	
CUSTOMER PRICE HISTORY ENQUIRY															
Account Code PHC		CASTLE BOY PLC													
Product Code PHC100		HILTI FIXING 37MM													
GBP															
Invoice No	Date	Ord Qty	Desp Qty	Ord Mt	Disc1	Disc2	Disc3	Nett Price	Gross Price	Suom	Marker				
MKI678	13/12/01	400	400	740.000	0.00	0.00	0.00	0.82	0.82	EACH	Special price				
MKI632	25/10/01	1	1	1.850	10.00	0.00	0.00	21.18	23.54	PAIR					
MKI565	31/05/01	200	200	370.000	10.00	5.00	0.00	27.04	31.64	PAIR					
MKI534	03/05/01	2	2	3.700	10.00	5.00	0.00	27.04	31.64	PAIR					
MKI532	03/05/01	2	2	3.700	10.00	5.00	0.00	27.04	31.64	PAIR					
MKI528	27/04/01	50	50	92.500	0.00	0.00	0.00	50.00	50.00	PAIR	Manual price				
MKI42	24/04/01	3	-3	-5.550	10.00	5.00	0.00	27.05	15.82	PAIR					
MKI523	24/04/01	500	500	925.000	10.00	5.00	0.00	27.04	31.64	PAIR					
MKI132	01/09/97	10	10	18.500	10.00	0.00	0.00	25.61	28.46	EACH					
MKI130	01/09/97	10	10	18.500	10.00	0.00	0.00	25.61	28.46	EACH					
MKI129	01/09/97	10	10	18.500	10.00	0.00	0.00	25.61	28.46	EACH					
MKI128	01/09/97	12	12	22.200	10.00	0.00	0.00	25.61	28.46	EACH					

<RETURN> to Continue

Fig REL6-33

This history not only supports the enquiry program but is also the index mechanism that allows restricted alpha-searching within order entry. Users who have this feature enabled are allowed to key a product search entry, for example,

LINTEL !C

This signifies that the search is for products with a keyword of LINTEL previously bought by this account. "Previously" will now be a longer period extending back up to 15 purchases rather than the present 4. Obviously, the additional history will only be accumulated from the date that this new release is loaded.

If you are interested in having this feature, "alpha search limiters", enabled contact ASG.

Customer Price History Purge – SOP.D6 – This program is located on the SOP6 Deletions menu as SOP.D6. It purges records from the Customer Price History file where either the Customer or the Product no longer exist. We would recommend running this function quarterly. The timing of the purge is not critical although it would be inappropriate to run at the same time as the SOP.U1 Dayend.

```
SYS REF: SOP          edp >>>>> M E R C H A N T <<<<<      17/12/01      SCREEN 1
                    PURGE REDUNDANT CUSTOMER PRICE HISTORY RECORDS

This process reviews all customer price history records

Those records discovered where the CUSTOMER and/or PRODUCT
file records no longer exist are deleted

Do you wish to run the purge process (Y/N)? :
```

Fig REL6-11

Hold Purges – SOP.Y2 – Previously two mechanisms for purging had been available, purging beyond a given date and purging so as to retain a specific number of transactions for each account using the CUSTOMER.ORDER.HISTORY file. Date based purging was prohibited for sites exploiting the latter mechanism. A new configuration combines the best features of both solutions allowing the purging of invoices and credit notes from the reprint account by date, yet still retaining the capabilities of the history based enquiries e.g. SOP.E18. For implementation of this contact ASG.

```
SYS REF: SOP.Y2          edp >>>> M E R C H A N T <<<<< 27/12/01  SCREEN 1
                        PURGE ROUTINE

      This routine will delete records from HOLD.SORDER, HOLD.SLINES,
      HOLD.INVOICES with a transaction date up to, and including, the
      date entered or enter "ALL" to delete all records from the file
      irrespective of the date.

      NB. Ensure the Posting line is stopped whilst this this process is running

Document type   :   Invoices and Credit notes
Date to be used :   31/12/00

-----
Are the HOLD files to be cleared (Y/ESC) : Y
```

Fig REL6-22

Order Conversion Audit - the system records a list of operators who have created or converted individual order lines. [The simple act of editing or amending an order line does not extend the operator audit history.]

Attribute SL99 of SLINES (or HOLD.SLINES) now maintains a list of operators. However, this is history information and is best explained by use of some examples.

A counter sale 'SI' that starts and ends its life as one transaction has no history and therefore SL99 is blank.

A quote 'QO' is also without history until it has been converted, at which point the operator that created the quote will be recorded in SL99 of the resulting SLINES record.

The SOP.E8, order enquiry, displays this order history.

Telesales

Proactive Telesales - this feature is now revised to support the use of SHIPTO accounts in your contact list.

There are now three available ufos that can be utilised when preparing telesales contact lists:

PATS.UFO.1 – allows operator selection on 5 criteria as below

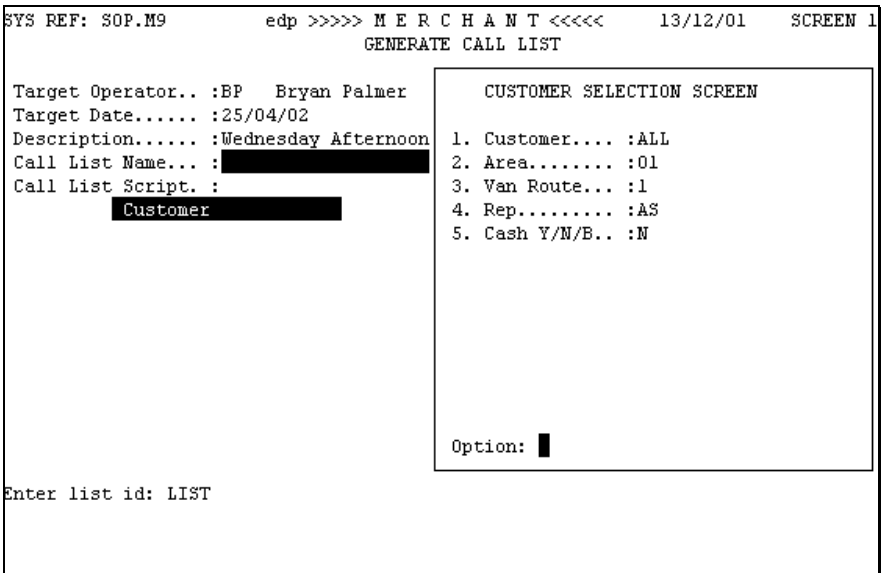


Fig REL6-06

PATS.UFO.2 – Prompts the operator for a list name. The list having already been created using Vision on the CUSTOMER file followed by the SAVE-LIST command.

PATS.UFO.3 – this works exactly as above but assumes that the select list has been created from the SHIPTO file.

One of the above ufo’s needs to be plugged into attribute 1 of the COMPANY item PRO-ACTIVE.TELESALES

Note that it is not possible to use a Save List containing both CUSTOMER and SHIPTO identities. However, once the list is entered into SOP.M9 you can use the 'Inn' option to add both CUSTOMER and SHIPTO identities.

Merchant users currently not using Pro-Active Telesales are advised that a formal training course in this aspect of Merchant is available and is recommended before implementing such a Telesales project. See the site:

www.edp.co.uk/solutions/sol_merchant_training_general.html - for details.

Background Despatch Notes - reprinting of these documents is now available via SOP.P31.

Order Enquiry Screen Order Selection – SOP.E8/SOP.E15 -

Within the LIST function these enquiries now allow alpha searching on SHIPTO identity. This form of access limits the search to only orders associated with the given SHIPTO account. If the entered alpha key is associated with a Customer record and a Shipto record, then the results of the search bring back the customer related orders.

Order Enquiry Screen Detail Display– SOP.E8/SOP.E15 - If your system has been configured to use the standard routine EDP.SOP.DO.132 within SOP.E8, SOP.E15 and the display order function (DO) within order entry, the functionality is as follows

<i>Special instructions</i>	displayed
<i>Internal instructions</i>	displayed
<i>MTA text</i>	the display is optional, by default it is not displayed
<i>MTB text</i>	as MTA
<i>Value</i>	where a special price is used the value will have an * against it - where a manual price or discount has been entered the value will have an ! against it

Credit Notes - A new feature has been introduced that allows

(a) credit reasons to be mandatory when a 'credit from invoice' is raised

and:

(b) ensures that what is entered exists on the CREDIT.REASONS file.

>CT COMPANY MANDATORY.CREDIT.REASON

001 Y - mandatory

002 Y - validates against the CREDIT.REASONS file

A manual credit note does not reference this switch. It is possible to install a ufo that will make a credit reason mandatory. Contact ASG.

Collection notes – When raising a collection note based on previous invoice information it is now possible to select lines from several different invoices on one collection note.

Deposits – prompting for a deposit may now be restricted to cash accounts only. (The system recognises cash accounts as those with CU27 set to 1.)

This feature is only available if deposits have been previously implemented. Should this facility be required please contact the ASG group for further details.

Orders that were created with a deposit before this new configuration switch is set - despite the fact that they were credit accounts - will continue to preserve the deposit data and present it for review or amendment at the appropriate places.

Order Enquiry SOP.E8 is enhanced to display the value of deposit taken where this has occurred. See the following overleaf.

```
SYS REF: SOP.E8          edp >>>> M E R C H A N T <<<<< 27/12/01  SCREEN 3
                                ORDER ENQUIRY
Invoice To                    Deliver To
CASH ACCOUNT                  CASH ACCOUNT
                              HARRY LONGBOTTOM LTD
                              WITHAM HIGH ST
                              WITHAM
                              ESSEX

Tel                            Comments
Contact                        Terms      1  30 DAYS NETT
Rep          BP BRYAN PALMER    Price Cat.  1
Area                            Credit Limit  0
Van Route                        Stock Branch 1  M. K. WHOLESALE Ltd
Invoice Date 27/12/01          Discount Cat

-----
OPTION: █
Operator      : Bryan Palmer      Customer Order :
Order Number  : MKD378           Order Category : DN
Despatch Goods : 0.00 + 0.00 VAT  Deposit Value  : 947.57
```

Fig REL6-39

Automatic Cost/List Price Amendment – SOP.S4/5 – Amendment to Selling and Cost Price Processes now supports additional ufo slots to provide for specific user requirements, for example a common product file, but separate price files per company, or multiple price lists which are logically related.

Order Deletion Within Edit Order - If you have enabled a password-controlled access to SOP.D1, the order deletion function, it is now also possible to activate the use of this password for order deletion within order edit. The intention is to prevent the unfamiliar operator from choosing to escape from edit which he/she could believe abandons the edit process but will actually cause order cancellation. Whether by mistake or by accident the setting up of this password prevents inappropriate order deletion ensuring only authorised personnel can remove a sales order. For implementation of this feature contact ASG.

Margin/Mark Up Negotiator – In sales order entry (when not in fast entry) many Merchant users like to configure screens to display the anticipated margin/mark up for that sale line. EDP refer to this feature as the 'negotiator' for obvious reasons as it is a key support tool for sales order clerks who are permitted to amend prices and/or discounts. Release 6.0.3 enhances this negotiator by permitting the cost component of this calculation to be different for quotes and non-quotes.

(One could assume that the buying detail cost might be more relevant for a quote whereas the actual FIFO cost is more appropriate for immediate sales.) Prior to release 6.0.3 the 'Nett Cost' displayed was always the buying details cost even where the calculation did not use this cost. The choice of cost displayed is now configurable. For implementation of this feature contact PSG.

Directs – Using Dummy Products

Dummy Products are for use in Direct orders only and are to enable one off product sales of non-stocked items, without using Specials. Specials were designed to handle one off sales of a non-stocked product and were not intended to be reused. A single Dummy product however can be reused over and over again with as many variations as required from the same dummy template. The key business benefit arising from this implementation is that the use of the Margin / Markup feature – known in Merchant as the 'Negotiator' – is available whereas for a Specials sales line entry this feature is not.

By the very nature of this type of product, the operator cannot rely upon the system providing a sales price that has been thoughtfully calculated by the commercial management team to yield a suitable margin. The sales clerk here has got to work out the correct deal on the fly. Having the support of the best tool possible – the Negotiator – is the key to getting this business and staying profitable.

The requirement to purge is also unnecessary if Dummy Products are used.

A Dummy Product record is created in SOP.S1 - no Inventory, Price or B.Details records are required. The Product type must be set to 'D' using Product Option - TY (written to PRODUCT PR5). A Product Group should be assigned to a Dummy Product during Product set up then during order entry the operator will be prompted to input a Product Group and may either accept the default value or input an alternative, valid, Product Group.

Use of the Dummy product is restricted to order types - QO, DO, DI (If the Dummy product is used in any other Order Type – or is used in QO, DO, DI but New Directs is not enabled) - then the product selection is denied with the text:

Invalid-You have selected a Direct Order dummy product

When dummy products have been enabled, use of the 'S' special product option within directs is disallowed. If the special option is used then the operator will be prompted with the following message:

Invalid-Direct order of temporary special product not allowed

When the Dummy product is used in order entry, the operator is forced to enter the Description, Product Group, Selling Price, Unit of Measure, Supplier, Buying Price and BUOM.

The Dummy product may be used as many times as needed on one order, but on second and subsequent use, input of the Supplier is not allowed - all products on a new Direct must be from the same supplier.

Where a Quote has been created which contains Dummy products, then conversion to any order type other than DO is unavailable.

Where a Quote has been raised for products from different suppliers - on conversion to DO then a warning is given stating that the QO has lines from more than one supplier - all lines are converted, but the supplier for each is set to the supplier of the first product line.

Where a Quote has been raised for a 'S' special product - then that line will not be converted on to the DO - a warning message is displayed.

For implementation of this feature, please contact PSG (Professional Services Group).

TIMBER

Metric Units – in line with the legal requirement to sell merchandise in only metric units, functionality is provided to inhibit selling in imperial units and prevent creation of imperial unit keys on a timber product.

While perfectly appropriate to refrain from the set up of imperial unit keys when considering the creation of new products, the deletion of a unit key for an existing product which may have been sold in that measure can cause problems and so should be avoided. Without such unit keys as well as being unable to sell in imperial quantities it would be impossible to quote your customers imperial comparative prices.

If you do elect to discontinue imperial keys for new products contact ASG.

Product Enquiry SOP.E21 A new TI option allows a review of how the Timber specific details of a product have been setup.

SYS REF: SOP.E21		edp >>>> M E R C H A N T <<<<<		21/12/01	SCREEN 1
PRODUCT ENQUIRY SCREEN					
* * * T I M B E R P R O D U C T S P E C I F I C A T I O N * * *					
	Part Number	URS050100	50X100 UNSORTED SWED REDW	1	20
Stock Type	Cubic & Specification		Surcharges	N	
Base Product	BASERS		Pack Product	Y	
	U/S REDWOOD SWEDISH BASE				
Stock Unit	Metric				
Thickness	50				
Width	100				
Nett Width	N/A				
Length	N/A				
	Additional Product Details				
Grade					
Finish	REG				
Origin	TROLHATTEN & GOTEBERG				
Range	SOUTHERN AREA VINN				

OPTION:	█				

Fig REL6-36

DFR's cleared after Release 5.2.1

DFR numbers relate to: - Specific jobs for Users
 - System Enhancements
 - Problem Issues

1067	1079	1092	1096	1142	1147	1149	1153
1155	1162	1165	1166	1169	1170	1171	1172
1173	1174	1175	1176	1177	1178	1179	1180
1181	1182	1183	1184	1185	1186	1187	1188
1189	1190	1191	1192	1193	1194	1195	1196
1197	1199	1200	1201	1203	1204	1205	1206
1207	1208	1209	1210	1211	1212	1214	1215
1216	1219	1221	1222	1223	1225	1226	1227
1229	1230	1231	1232	1233	1234	1236	1238
1239	1240	1241	1242	1243	1244	1245	1247
1248	1250	1252	1253	1254	1255	1256	1257
1261	1262	1263	1264	1266	1267	1270	1274
1275	1276	1278	1279	1280	1282	1283	1284
1285	1287	1289	1290	1291	1292	1293	1294
1295	1296	1297	1298	1299	1300	1301	1302
1304	1306	1307	1308	1310	1311	1312	1316
1317	1318	1319	1320	1321	1323	1324	1327
1328	1329	1330	1332	1334	1335	1337	1338
1339	1340	1341	1345	1346	1347	1348	1350
1351	1352	1353	1354	1355	1356	1359	1360
1361	1363	1364	1366	1367	1368	1369	1370
1371	1372	1373	1374	1375	1376	1377	1381
1382	1383	1384	1385	1386	1387	1388	1389
1393	1394	1395	1396	1397	1399	1401	1405
1406	1408	1409	1410	1411	1412	1413	1415
1416	1417	1418	1419	1420	1421	1422	1423
1424	1428	1429	1430	1433	1434	1435	1438

1443	1445	1446	1447	1448	1449	1450	1451
1456	1457	1458	1459	1460	1463	1466	1467
1468	1470	1474	1482	1483	1486	1487	1488
1489	1492	1494	1495	1496	1500	1501	1505
1506	1507	1509	1510	1511	1512	1516	1519
1520	1521	1522	1523	1524	1525	1526	1527
1528	1529	1530	1531	1532	1533	1536	1537
1538	1539	1542	1543	1544	1545	1546	1547
1550	1551	1555	1556	1557	1558	1560	1561
1562	1565	1571	1574	1576	1578	1580	1581
1590	1592	1597	1600	7071	7125	7127	7131
7132	7134	7136	7141	7162	7170	7172	7174
7176	7177	7179	7181	7182	7183	7184	7185
7187	7188	7189	7190	7192	7193	7195	7196
7198	7200	7201	7203	7204	7205	7206	7207
7208	7209	7211	7212	7213	7214	7215	7216
7217	7219	7225	7229	7230	7231	7232	7233
7236	7238	7242	7243	7245	7246	7247	7251
7254	7255	7257	7258	7259	7260	7261	7262
7264	7265	7268	7276	7278	7279	7281	7284
7287	7288	7289	7292	7293	7294	7296	7297
7298	7299	7302	7303	7304	7305	7307	7311
7312	7313	7317	7319	7321	7323	7324	7325
7326	7329	7334	7336	7340	7341	7342	7343
7348	7349	7350	7353	7354	7356	7357	7358
7361	7362	7363	7364	7365	7368	7369	7370
7372	7373	7374	7375	7376	7377	7378	7380
7381	7382	7383	7384	7385	7386	7387	7389
7391	7392	7393	7394	7395	7396	7397	7398
7400	7401	7402	7403	7404	7405	7408	7409
7410	7411	7412	7413	7415	7417	7418	7419
7421	7422	7423	7424	7425	7426	7429	7430
7431	7432	7433	7434	7435	7436	7437	7438
7439	7441	7445	7446	7450	7451	7453	7455
7456	7457	7458	7459	7460	7464	7466	7467
7468	7481	7482	7483	7484	7485	7486	7487

7489	7490	7492	7496	7497	7499	7500	7501
7502	7503	7504	7505	7506	7507	7508	7509
7512	7513	7514	7515	7517	7518	7519	7520
7521	7522	7525	7526	7527	7531	7532	7533
7534	7535	7536	7538	7539	7540	7541	7542
7543	7544	7545	7546	7547	7548	7549	7550
7552	7559	7560	7562	7563	7564	7565	7566
7567	7568	7570	7573	7574	7575	7579	7580
7581	7583	7584	7586	7587	7589	7594	7596
7597	7601	7602	7603	7604	7606	7607	7608
7609	7610	7612	7618	7620	7622	7624	7625
7626	7628	7630	7632	7633	7635	7636	7637
7638	7641	7642	7643	7644	7645	7648	7650
7651	7652	7653	7654	7655	7656	7657	7658
7664	7665	7668	7670	7673	7674	7677	7678
7679	7681	7687	7690	7691	7695	7696	7700
7701	7702	7703	7704	7705	7707	7708	7710
7711	7712	7713	7717	7719	7721	7722	7723
7724	7725	7726	7732	7733	7736	7742	7743
7751	7752	7753	7755	7757	7758	7761	7762
7763	7765	7769	7771	7772	7773	7774	7775
7777	7778	7780	7781	7783	7784	7785	7786
7792	7793	7794	7795	7796	7798	7800	7801
7802	7803	7804	7805	7810	7811	7813	7814
7815	7818	7819	7820	7821	7822	7823	7824
7825	7826	7832	7833	7834	7835	7838	7839
7840	7843	7844	7846	7849	7850	7851	7852
7858	7859	7862	7863	7864	7874	7875	7876
7877	7878	7879	7882	7885	7886	7889	7892
7894	7895	7896	7897	7899	7900	7902	7904
7905	7906	7908	7909	7910	7911	7913	7914
7915	7916	7917	7918	7919	7920	7924	7925
7926	7929	7930	7932	7934	7935	7936	7937
7938	7940	7941	7942	7943	7944	7945	7946
7947	7948	7950	7951	7952	7953	7955	7958
7959	7960	7961	7962	7963	7964	7965	7968

7969	7972	7973	7975	7978	7979	7980	7981
7982	7983	7984	7985	7986	7987	7988	7997
7998	7999	8501	8502	8503	8504	8506	8527
8528	8530	8532	8534	8536	8537	8538	8539
8545	8546	8547	8548	8549	8550	8551	8557
8572	8573	8574	8575	8576	8577	8578	8579
8580	8582	8583	8584	8586	8587	8599	8600
8601	8603	8610	8611	8612	8616	8617	8618
8619	8620	8626	8627	8629	8630	8631	8632
8633	8634	8635	8637	8638	8644	8645	8647
8650	8652	8653	8655	8657	8658	8659	8660
8664	8665	8666	8667	8668	8672	8673	8674
8676	8678	8679	8681	8682	8683	8684	8690
8692	8693	8695	8697	8700	8701	8702	8703
8705	8706	8708	8711	8712	8713	8714	8715
8716	8717	8718	8722	8723	8724	8727	8734
8735	8736	8737	8738	8739	8740	8741	8742
8743	8744	8745	8747	8754	8755	8756	8757
8759	8771	8774	8775	8776	8777	8779	8780
8781	8786	8788	8791	8792	8793	8795	8797

